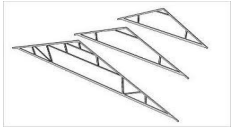




**QUALITY, PRICE, SELECTION... POPULAR TOOLS HAS IT ALL**

# TRUSS SAWS



**CALL POPULAR TOOLS TODAY TO INQUIRE ABOUT OUR FULL LINE OF TRUSS AND COMPONENT SAWS. STOCKING BLADES FOR MITEK, TIMBER MILL, CLARY, ALPINE, RAZOR, IDACO, TRIAD, AUTO-OMNI, MONET, MANGO-TECH AND INTRODUCING NEW TO OUR LINE, HUNDEGGAR, READY FOR IMMEDIATE SHIPPING. WE STOCK OVER 100,000 SAWS IN OUR 3 USA WAREHOUSES. OUR FINE PRODUCTS ARE SOLD BY THE EXPERT SAW SHARPENERS AND SAW PROFESSIONALS. POPULAR TOOLS NEVER SELLS DIRECT TO "END USERS"!!**

- TRUSTED FOR OVER 20 YEARS
- TCT SAWS FROM 4" - 32"
- CUSTOM BLADE QUOTES

DIA	TEETH	DESIGN	KERF	PLATE	MACHINE	ORDER ID	LIST-PRICE
16"	50	TCG	.202"	.150"	MITEK	TRMK1650	\$304.00
20"	60	TCG	.202"	.150"	MITEK	TRMK2060	\$425.00
32"	80	TCG	.260"	.200"	MITEK	TRMK3280	\$1000.00
20"	80	TCG	.209"	.150"	TIMBERMILL	TRTM2080TRS	\$407.00
18"	60	ATB	.209"	.150"	CLARY	TR1860	\$341.00
350mm	54	ATB	4.0mm	2.8MM	RAZOR	TRAZ35054A4	\$179.00
30"	80	TCG	.260"	.200"	IDACO	TRID3080T	\$940.00
30"	80	ATB	.260"	.200"	TRIAD	TRIAD3080A	\$940.00
12"	40	ATB	.142"	.091"	AUTO-OMNI	TRK1240A	\$142.00
20"	40	ATB	.205"	.154"	AUTO-OMNI	TRK2040A	\$341.00
30"	80	TCG	.260"	.200"	AUTO-OMNI	TRK3080	\$940.00
16"	40	ATB	.190"	.148"	KOSKOVICH	TRK1640K19	\$299.00
16"	40	ATB	.190"	.150"	KOSKOVICH	TRK1640T25A	\$299.00
16"	40	TCG	.190"	.150"	KOSKOVICH	TRK1640T25	\$299.00
16"	40	TCG	.185"	.134"	MONET	TRDS1640	\$270.00
30"	80	TCG	.260"	.200"	MONET	TRDS3080	\$940.00
450mm	40	ATB	4.7mm	3.4mm	MANGOTECH	RA4503540	\$237.00
650mm	96	ATB	5.6mm	3.8mm	HUNDEGGAR	TRHN65096	\$900.00



**ARE YOU POPULAR?**

Santa Fe Springs, CA  
 (800) 518-7297  
 fax 562-789-8727

San Antonio, TX  
 (800) 610-SAWS  
 fax 210-348-0776

High Point, NC  
 (800) 881-7297  
 fax 336-889-2878



[www.POPULARTOOLS.NET](http://www.POPULARTOOLS.NET)

